

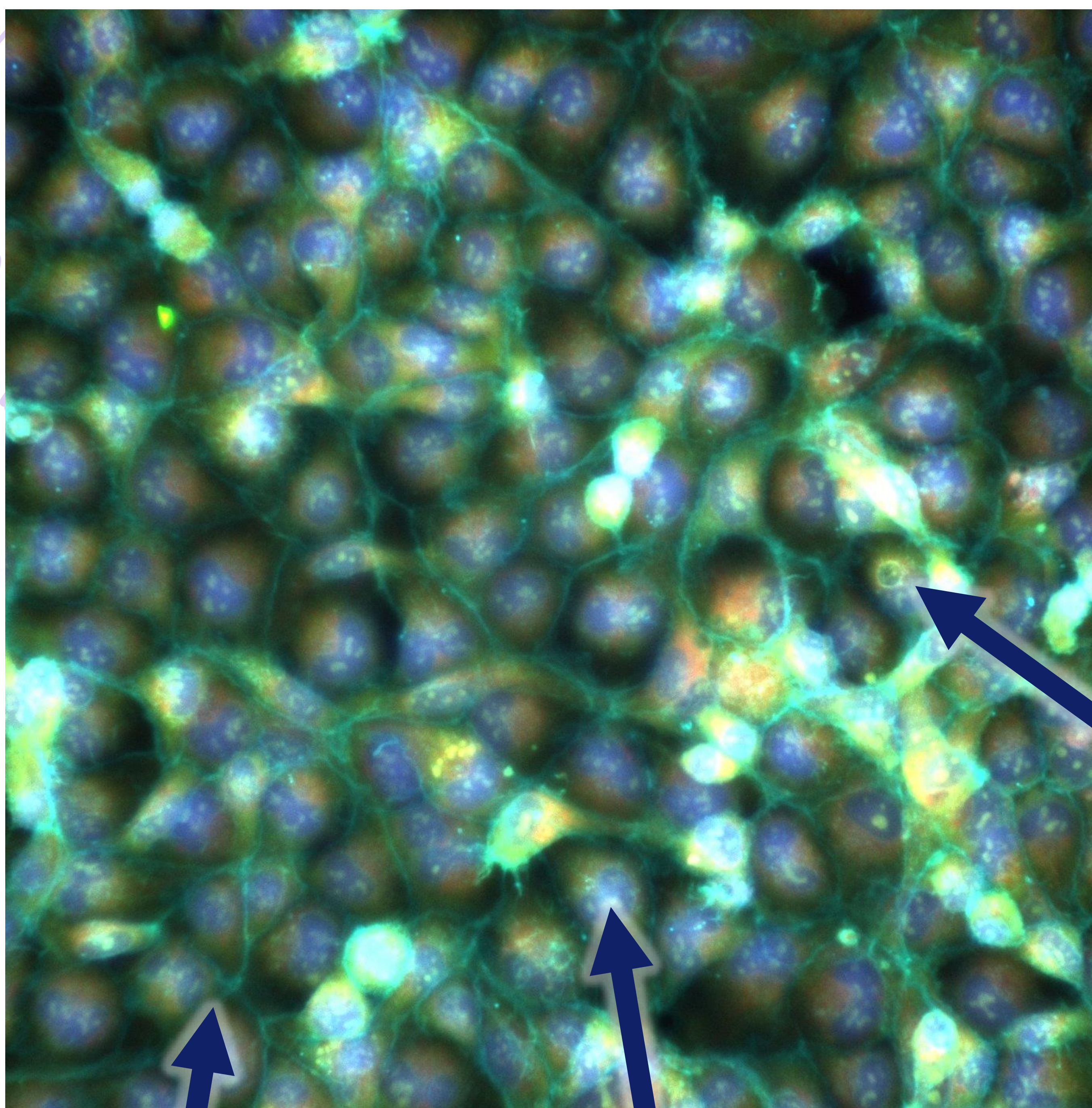
Cell painting

How to tell healthy from unhealthy cells?

What is cell painting?

Cell painting lets us use dyes to colour different parts of the cell. This way we can see how the cell is built. Unhealthy cells have changed appearances compared to healthy ones. With cell painting, we can make these differences visible.

Use the key below to tell apart healthy and unhealthy cells



Healthy cells are much smaller compared to unhealthy ones
These are the same magnification!



Watch out for the bigger dark blue nuclei in unhealthy cells

Observe the nucleoli that are smaller in healthy cells

The light blue cytoskeleton is more defined in unhealthy cells

